

WHEN YOU PUT PATIENTS' HEALTH FIRST,
REMARKABLE THINGS FOLLOW

At Frankenman, we believe we're not so much in the business of making instruments but in the business of making surgeries more successful.

That's why we listen to doctors who've put our instruments to use. We read their reports. We invite them to think with us, to brainstorm, to help us develop new and innovative ideas.

That way we know we will be able to deliver the highest quality products to the medical profession both today and way into the future.



State-of-the-art manufacturing facilities.



CHEX™
SURGICAL STAPLERS

INFORMED DESIGN.
SCRUPULOUSLY APPLIED.
METICULOUSLY PRODUCED.



INFORMED DESIGN.
SCRUPULOUSLY APPLIED.
METICULOUSLY PRODUCED.

CS COMPACT™ EA SHORT STRAIGHT CIRCULAR STAPLER

DESIGNED FOR EXTRA-CORPOREAL OR
ENDO-ANAL ANASTOMOSIS

CHEX™
SURGICAL STAPLERS

THE CS COMPACT™ EA RANGE OF PRODUCTS WAS
DEVELOPED IN COLLABORATION WITH QUEEN MARY,
UNIVERSITY LONDON.



OUR RANGE OF PRODUCTS INCLUDE

SINGLE USE CIRCULAR
STAPLER FOR RECTAL
PROLAPSE AND
HAEMORRHOIDS

SINGLE USE
RELOADABLE LINEAR
STAPLER

SINGLE USE CURVED
INTRALUMINAL
CIRCULAR STAPLER

CPH34HV

SINGLE USE
RELOADABLE LINEAR
CUTTER STAPLER

SINGLE USE
TRANSVERSE CUTTING
LINEAR STAPLER



FOR MORE INFORMATION OR TO VIEW OUR ENTIRE PRODUCT RANGE PLEASE VISIT OUR WEBSITE AT WWW.FRANKENMAN.HK



FRANKENMAN INTERNATIONAL LTD
SUITE B 13/F WING TAT COMMERCIAL BUILDING
121-125 WING LOK STREET SHEUNG WAN HONG KONG
T +852 3106 3035 F +852 3585 0519
E info@frankenman.hk

www.frankenman.hk

Chex and Chex Healthcare are registered
trademarks of Frankenman International Limited

A RANGE OF CIRCULAR STAPLERS FOCUSED ON MAKING RECTAL ANASTOMOSIS EASIER

The Chex CS COMPACT™ range was developed in collaboration with one of the world's leading Specialist centres in Colon and Rectal Surgery. The resultant range of circular staplers creates devices that make anastomosis of the rectum easier.

The surgeons wanted more control of the surgical stapler, they wanted a more stable device, particularly when firing. They wanted more 'feel' and felt that simply shortening the working length of a conventional straight circular stapler would give him that control... we responded and they were right.

The CS COMPACT™ is a SHORT-STRAIGHT Circular Stapler 345mm long, that in many Low and especially Ultra-Low Anterior resections will feel right for you.

We listened.

KEY FEATURES



1 OVERALL WORKING LENGTH REDUCED TO 345MM.

2 AVAILABLE IN TWO CONFIGURATIONS... CS COMPACT™ AND CS COMPACT™ EA. ALSO AVAILABLE IN STANDARD "CS" CONFIGURATION

3 EA ANVIL SHAFT.
THE RADICAL NEW AND LENGTHENED DESIGN OF THE ANVIL SHAFT NOT ONLY GIVES AN AUDIBLE BUT ALSO A VISUAL INDICATOR TO CONFIRM COMPLETE.

4 SMOOTH AND ROUNDED ANVIL DESIGN TO ASSIST IN DEVICE EXTRACTION

5 SMOOTH ERGONOMIC AND ATRAUMATIC INSERTION TUBE.

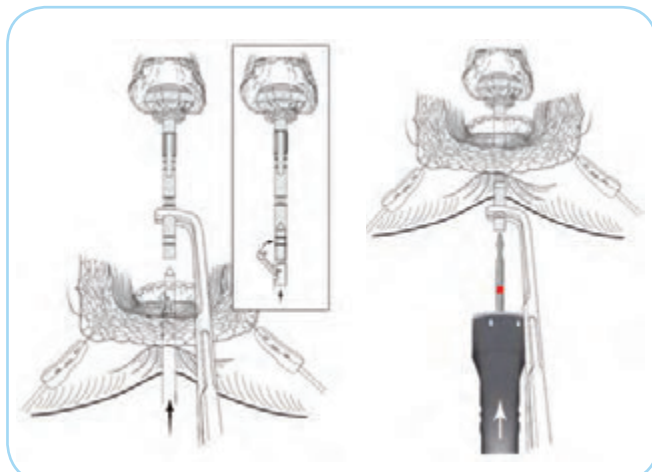
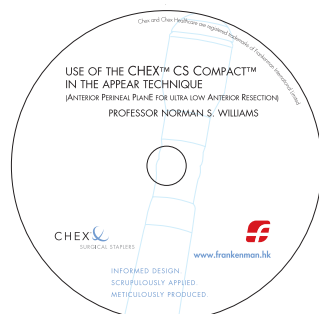
6 STAPLE COMPRESSION GAUGE TO ENSURE ACCURATE STAPLE FORMATION TO SUIT VARIABLE TISSUE THICKNESSES.

7 'WING NUT' TO ASSIST CONTROL AND DEXTERITY WHEN OPENING AND CLOSING ANVIL.

THE CHEX™ CS COMPACT™ EA CHEX™ SURGICAL STAPLERS ENDO-ANAL ANASTOMOSIS

ENDO-ANAL, or extra-corporeal anastomosis, is a technique created by Professor Norman Williams to facilitate ultra-low anastomosis during the APPEAR technique*.

A high quality procedural DVD is available detailing this remarkable sphincter saving procedure – contact info@frankenman.hk, or your local Frankenman/Chex distributor, for your free copy.



PRODUCT SPECIFICATIONS

MODEL	DESCRIPTION	TOTAL WORKING LENGTH	COLOUR CODE	SIZE OF STAPLE	OUTER DIAMETER	CUTTING DIAMETER	STAPLE QUANTITY
CS21CT/EA	CS COMPACT™ EA CIRCULAR STAPLER 21MM DIAMETER.	345MM	ORANGE	3.8MM 4.2MM	21MM	13MM	16
CS25CT/EA	CS COMPACT™ EA CIRCULAR STAPLER 25MM DIAMETER.	345MM	WHITE	4MM 5MM	25MM	17MM	20
CS28CT/EA	CS COMPACT™ EA CIRCULAR STAPLER 28MM DIAMETER.	345MM	BLUE	4MM 5MM	28MM	20MM	24
CS32CT/EA	CS COMPACT™ EA CIRCULAR STAPLER 32MM DIAMETER.	345MM	GREEN	4MM 5MM	32MM	24MM	28

*Ann Surg 2008; 247: 750-758 Anterior Perineal Plane for Ultra-low Anterior Resection of the Rectum (The APPEAR Technique) Norman S. William, MS, FRCS (Eng.) et al.